



May 23, 2011

Week Nine, Spring Quarter

## MEETINGS OF THE WEEK

Wednesday, May 25<sup>th</sup> - Faculty Meeting, GH144, 4:00pm

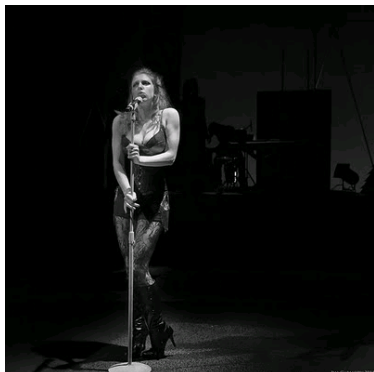
## FACULTY AND STAFF NEWS

**Instructor reminder** - Final Exam week is approaching, remember the rules? All final exams must be given during the times published in the schedule of classes. Changes must be requested and approved *in advance* by the Committee on Educational Policy (CEP). If a change in time is approved, the final exam may be offered at the newly scheduled time; however, the final exam must also remain available to students at the originally scheduled time. Instructors *may not* require “take home” final exams to be due prior to the scheduled examination time.

## DEPARTMENT NEWS

**Congratulations to Rana Salimi**, a Ph.D. student in Theatre, won one of the campus’s four Presidential Dissertation Year Fellowships for 2011-12. Her dissertation is on “Visual Representation of Palestinian Female Martyrs Inside and Outside of the Muslim Culture,” a performance studies approach to the videos made by Muslim females before they undertake suicide missions. The Presidential Dissertation Year Fellowship program is designed to identify doctoral candidates who have been educationally or economically disadvantaged or whose research or planned career direction focuses on problems related to disadvantaged segments of society. Dissertation Year Fellowships are awarded to promising students in the final stages of their doctoral work who demonstrate strong potential for university teaching and research.

Professor **Marianne McDonald** has been honored by having a [theatre](#) that she helped establish in Nieu Bethesda, South Africa, named after her. It has helped the cultural life there enormously, and staged one of the first public performances with whites and non-whites on stage together in the country.



MFA student **Krista Knight** and music composer Barry Brinegar set up a website for the recent Baldwin New Play Festival production of [Salamander Leviathan](#). You can check out production photos, listen to the live cast recording, watch on and off site videos, read reviews, and donate to further development, if you wish.

Photo by Professor Jim Carmody

## ONSTAGE



*Opening This Week - [The Underground New Play Festival](#), May 26<sup>th</sup> - June 4<sup>th</sup>.*

**[Maman Joon](#)** - "In a house besieged lived a man and a woman. From where they cowered in the kitchen the man and woman heard small explosions. "The wind," said the woman. "Hunters," said the man. "The rain," said the woman. "The army," said the man. The woman wanted to go home, but she was already home, there in the middle of the country in a house besieged."

**[Butterfly in China](#)** - A look at how the choices that we make in any given moment can affect our own lives and the lives of those around us. A professor gives the last lecture of his life while a chance encounter radically alters the paths of two strangers. Maybe even the world.

**[Nevermind](#)** - If you woke up with no memory of who you were, what would be the darkest secret you could discover about yourself? Willard awakens to this very question in a strange, mysterious environment, and with the help of the enigmatic—but strangely familiar—Susie, he begins piecing together the clues of his forgotten life. What he discovers is that he may not be the hero of his own story...he may be the worst kind of villain instead.

**[Walls](#)** - A play about God, faith, the generational gap, existentialism, theatre, rebellion against hopeless causes, suburban America, or the holocaust, depending upon who you ask. The playwright himself may or may not know; he was unavailable for comment. It takes place in an ordinary middle-class household, and includes at least one unexpected scene change. To say anything else would be to give too much away.

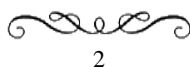
**[Big Bang](#)** - Can experience be created, or must one undergo it? Struggling author Charlene battles the noise and chaos of her overcrowded apartment building as she sets out to write the novel that will make her career. An exploration of the process of authorship and creativity, Big Bang paints a picture of life at its richest and most diverse and hints at how finding inspiration simply in the world around us can lead to deeper, more meaningful work.

**[A Likely Story](#)** - Alice lives in Utah and talks too much. King lives in San Francisco and complains too much. And while just fifty years ago they'd go through hell trying to see each other, much less date each other, the spoils of the 21st century let them do just that. The question is: will they remember who they are in the process? A love story, replacing princesses and dragons with awkward dates and Facebook stalking.

**[Broken China & Honey Bears](#)** - If Teagan is Goldilocks, and her hallucinations are the 3 bears, then Teagan's secret lover, pregnant with Teagan's husband's child, is the hot porridge. And that's not the half of Broken China & Honey Bears. For Teagan, fantasy is too big, and reality is too cold, and there are too many voices telling her what's just right.

**[Surprise in Sea Sharp](#)** - An exploration of human compassion and connection. It presents a heightened reality where anything (and its opposite) can coexist. The play asks questions about the decisions that a person can make when everything, including limitations, desires, hobbies, tomato juice, and camels, is up in the air.

**Tickets** - Advance tickets are [available online](#). At-the-Door tickets, if available, are "pay what you can" starting one hour before show time at the Arthur Wagner Theatre.



More...



***Coming Next Week!***

[New Directions - MFA I Student Choreographers' Showcase](#)

June 1<sup>st</sup> – 4<sup>th</sup> in the Sheila and Hughes Potiker Theatre

Co-Directed by **Eric Geiger** and **Pat Rincon**. Our first year MFA Dance Theatre choreographer **Anya Cloud** stretches dance theatre boundaries in an inventive, new work along with original works by our most talented undergraduate choreographers. Photo by Manuel Rotenberg.

## ADMINISTRIVIA

May 27<sup>th</sup> – Deadline to drop without a grade of “F”

May 30<sup>th</sup> - Memorial Day Holiday, campus closed.

June 3<sup>rd</sup> – Undergraduate Department Graduation Ceremony

June 6<sup>th</sup> – Final Week Begins

## ALUM UPDATES

[Johnny Wu](#) (MFA '09) writes: “So I recently appeared in [Limitless](#) with Bradley Cooper where I stole the final scene of the film. :) [*Limitless* is playing in San Diego movie theatres now.] Currently in Chicago working on [Chinglish](#) - the latest play by David Henry Hwang, directed by Leigh Silverman, at the Goodman Theatre.”

[April Winney](#) (BA '01) “I am currently completing my second feature film. A few weeks ago, my first feature was released on DVD. It’s on sale on Amazon, Target, etc. It is also available to rent on Netflix and Blockbuster. It’s called [Counting Backwards](#). Even if you don’t ever watch it, please add it to your Netflix queue. It will say “availability unknown” but add it anyway. It helps Netflix decide how many to order. If you do get the chance to watch it, please rate it on Netflix or IMDB. All that stuff helps a small movie like this. Thanks for all your support.”

[Stephanie Gattton](#) (MFA Stage Management, '05): “Been living in NYC ever since graduation, and after freelancing off-Broadway for 3 years, took a permanent position as Associate Theater Manager at the Guggenheim Museum on the Upper East Side. About to enter my fourth year in the art world, amongst the Kandinskys and Picassos.”

[Mellie Katakalos](#) (MFA '05): “After living in California for 14 years, my family & I are moving back to the east coast. I will be the new scenic design professor at Lehigh University starting in the fall. NYC/Philly: here I come!”



**Alums – On Facebook?** Come visit the Department’s [Facebook Alumni](#) page!

---

**Note:** Just hit “reply” and send your info, and we’ll share it for you. Be sure to let us know what your name was at graduation, if you’ve changed it, and your year of graduation.